

DYN^{ESS}

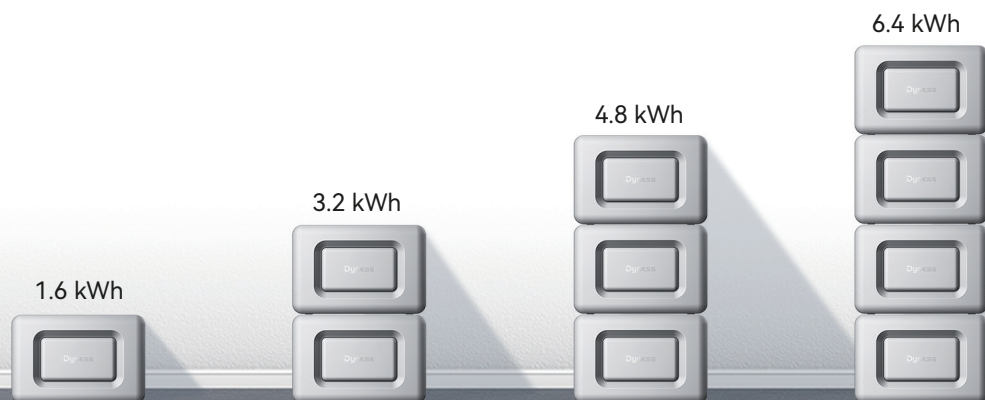
JUNIOR BOX

Balcony Solar System



Giant capacity

Junior Box has 1.6 kWh capacity per unit. Stackable module (Up to 4 batteries for 6.4 kWh) ensures continuous power supply to the home day and night for **families of 3-5 members**.



Plug&Play

Works with 99% of all balcony power plants. Featuring MC4 connectors, the Junior Box allows you to use virtually most balcony power plants on the market. Suitable for a variety of situations:



Home with balcony power plants installed

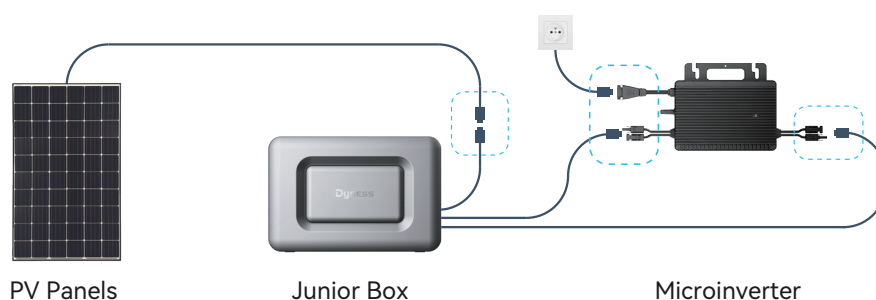
Add Junior Box(1.6 kWh-6.4 kWh) easily



Home without balcony power plants

We can provide one-stop solution:
Junior Box+Microinverter+PV panels

Junior Box is ideal for amateur and professionals who want to make installing a solar energy system on their own.



High level protection

IP55 protection is designed to withstand all weather conditions, and with an intelligent BMS (Battery Management System) it ensures balanced charging cycles and optimal heat dissipation, providing unparalleled efficiency and longevity, as always, without posing safety risks.



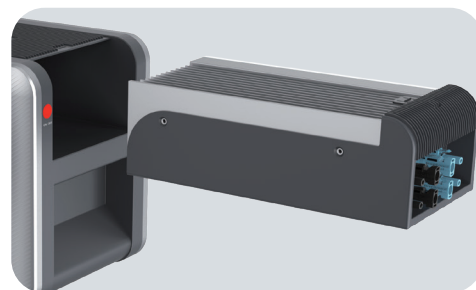
Long service life

8000 charge cycles LiFePO4 batteries, 15 years design life, 10 years warranty.



Easy maintenance

Removable MPPT and BMS modules for easy maintenance.



Dyness APP

Use the intuitive Dyness app to easily track module power generation and control the output of your Junior Box system. Switch between usage modes at the tap of a finger.

Power your day and night



Load priority

When the system is operating in load-first mode, the user can set the power to the microinverters through the JuniorBox, and when available solar energy is insufficient to meet the set power, the Junior Box and PV panels supply energy to the home circuits at the same time.

Battery priority

In Battery Priority Mode, you can set the power to charge the battery, prioritizing the battery and powering the home with excess energy.



Dyness Junior Box Balcony Solar System can save around 315€^[1] electricity fee per year for your family.

Specifications

Basics	Battery Type	LiFePO4
	System Energy	1.6 kWh
	Dimensions	420 mm*283.5 mm*245 mm
	Weight	19.4 kg
	Protection Level	IP65
	Cycle Life	≥ 8000 Cycles
	Warranty	10 Years
	Charging Temp. Range	0 °C to 55 °C
	Discharging Temp. Range	-20 °C to 55 °C
	APP	Yes
	Communication	RS485
	Max.PV Input Power(W)	1200 W
	Max. Input Voltage(V)	65 Vd.c.
	MPPT Range(V)	18-60 Vd.c.
	Max.Input/ Output Current(A)	30 A
	Max. Output(W)	800 W
Expansion	Expansion Method	Stackable
	Maximum Expansion Modules	4
	Maximum expansion energy	6.4 kWh

[1]: These data are based on average user scenarios of a balcony solar system in Germany: The electricity price is currently 0.40€/kWh, The annual electricity generation of Junior Box ESS is 876 kWh. 876 kWh × 90% self-consumption rate × 0.4€* per kWh = 315€